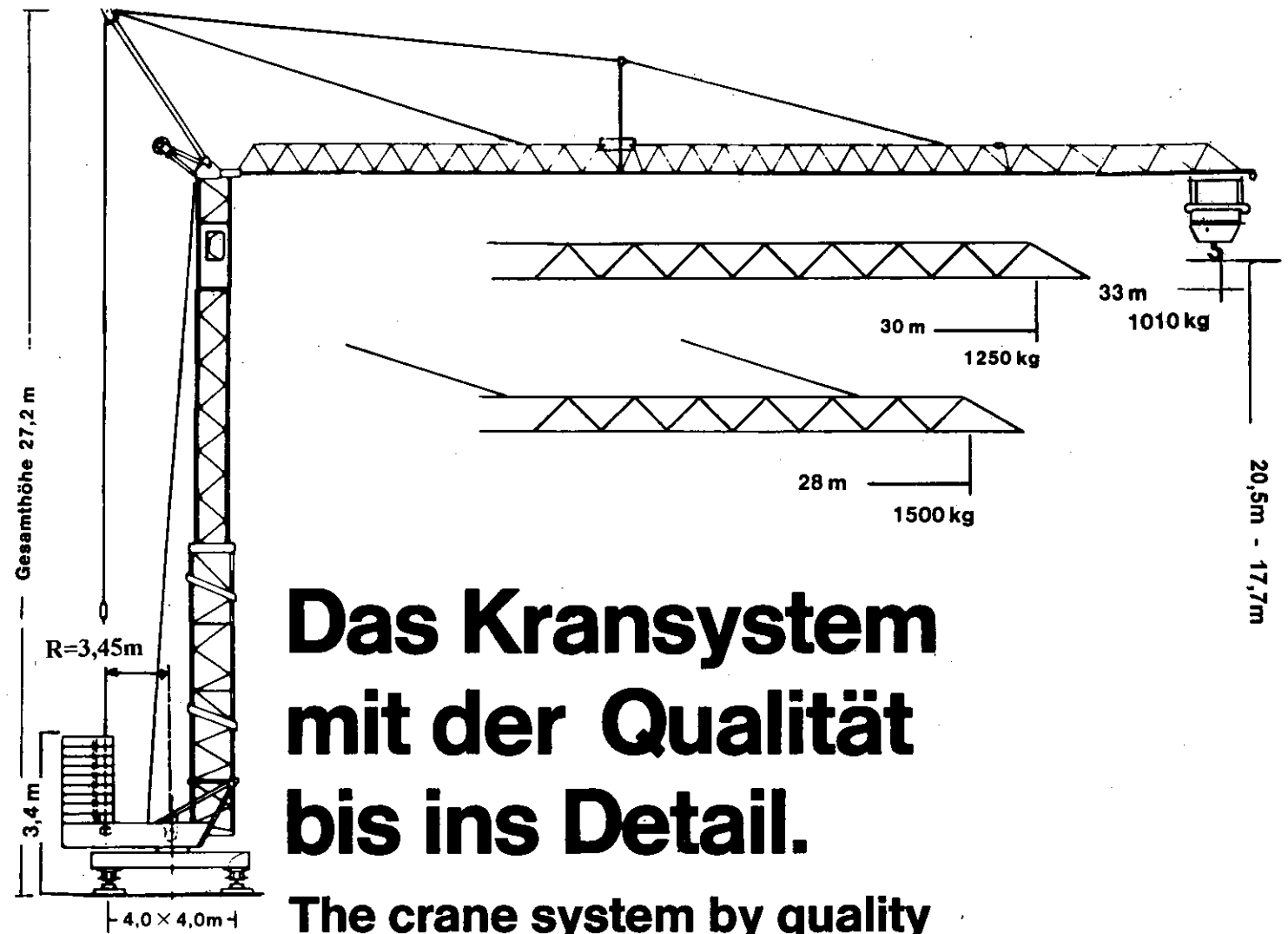


Turmdrehkran K 34 S-2K

Tower Crane - Grue à tour



**Das Kransystem
mit der Qualität
bis ins Detail.**

**The crane system by quality
to the detail.**

**Dans ces grues là le moindre détail
est synonyme de qualité.**



KÖNIG-KRANE
Made in Germany

Ausleger Länge Length of jib Longue de flèche	Ausladung und Tragfähigkeit Radius and capacity Portée et charge													K 34 S-2K
	10 m	12 m	14 m	16 m	18 m	20 m	22 m	24 m	26 m	28 m	30 m	32 m	33 m	
33 m	2000 kg	2000 kg	2000 kg	2000 kg	2000 kg	1870 kg	1670 kg	1500 kg	1350 kg	1240 kg	1140 kg	1050 kg	1010 kg	
30 m	2000 kg	2000 kg	2000 kg	2000 kg	2000 kg	2000 kg	1830 kg	1650 kg	1490 kg	1370 kg	1250 kg			
28 m	2000 kg	2000 kg	2000 kg	2000 kg	2000 kg	2000 kg	1960 kg	1770 kg	1600 kg	1500 kg				

Ausleger Länge Length of jib Longue de flèche	Ausladung und Tragfähigkeit Radius and capacity Portée et charge													K 34 S-2K
	10 m	12 m	14 m	16 m	18 m	20 m	22 m	24 m	26 m	28 m	30 m	32 m	33 m	
33 m	4000 kg	3560 kg	2940 kg	2490 kg	2160 kg	1860 kg	1650 kg	1480 kg	1340 kg	1220 kg	1120 kg	1030 kg	990 kg	
30 m	4000 kg	3880 kg	3210 kg	2730 kg	2370 kg	2080 kg	1810 kg	1630 kg	1470 kg	1350 kg	1230 kg			
28 m	4000 kg	4000 kg	3450 kg	2950 kg	2540 kg	2240 kg	1940 kg	1750 kg	1580 kg	1480 kg				




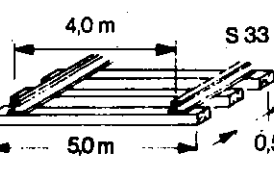
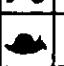

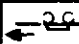


Gewichte
Weight
Poids

Konstruktionsgewicht ca
Dead weight approx. 13 250 kg
Poids de la construction env.

Gegengewichte ca
Counterweight approx. 16 850 kg
Contrepoids enr.

Teilballastverfahrbar
Transportable with partial counterweight 17 650 kg
Acharge partiellement déplaçable

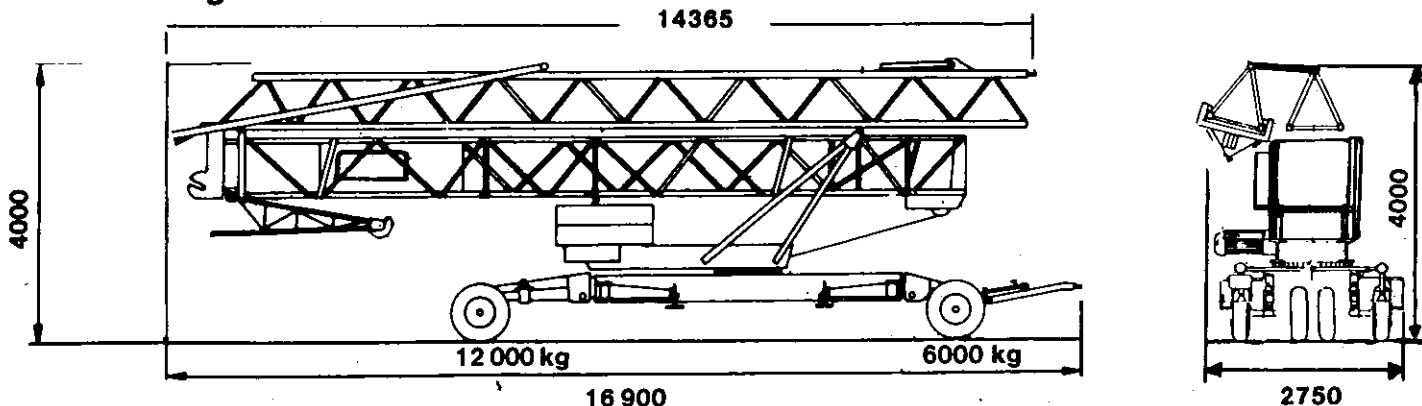
Antriebe - Mechanisms - Mécanismes

			
	45 m/min - 1000 kg (7,7 KW)	22,5 m/min - 2000 kg (7,7 KW)	
	22,5 m/min - 2000 kg (7,7 KW)	11,25 m/min - 4000 kg (7,7 KW)	
	6 m/min - 2000 kg (2,3 KW)	3 m/min - 4000 kg (2,3 KW)	
	17,5/35 m/min	1,1/1,5 KW	
	30 m/min	2x1,8 KW	
	0 - 1 u/min stufenlos 3 KW		Gesamtanschlußwert 15,6 KW

Radius
Radius 3,45 m
Rayon

Eckdruck
Reactions 19 750 kg
Réactions

Abmessungen - Dimensions - Cotes



Teilballastverfahrbar -
Transportable with partial counterweight - A charge partiellement déplaçable