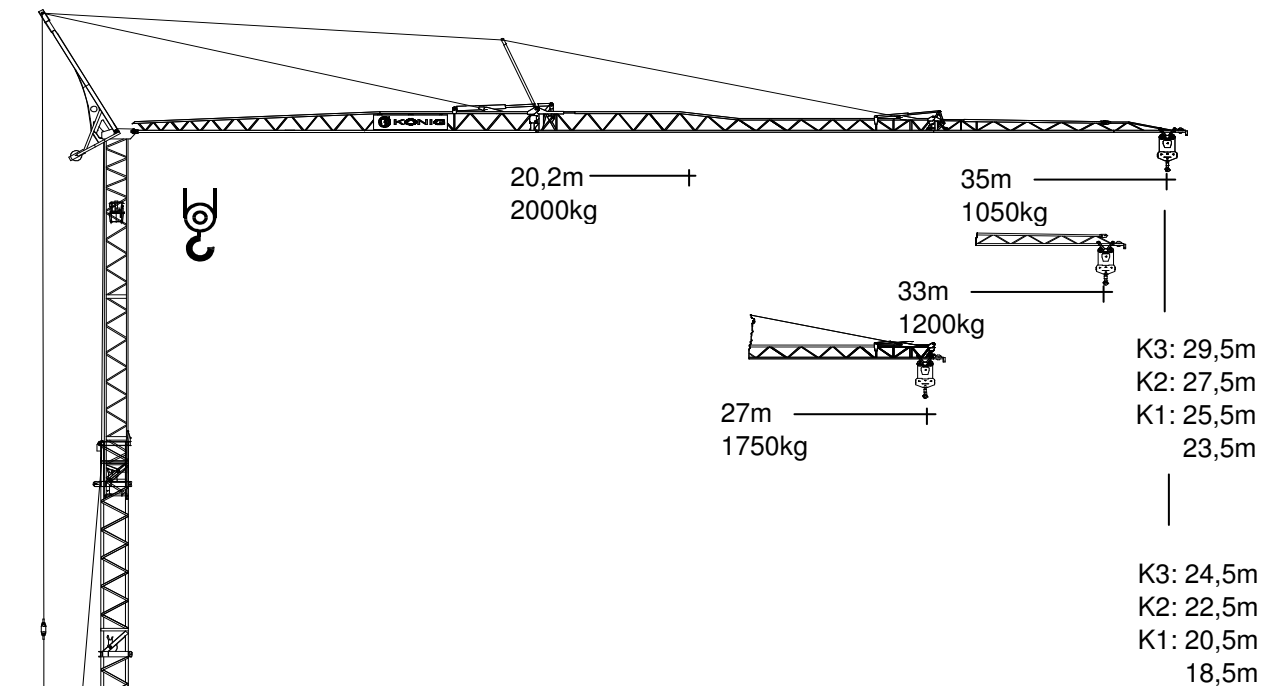


# Turmdrehkran K 1035 TKH

Self-erecting Crane    Grue à tour



## Das Kransystem mit der Qualität bis ins Detail

The crane system with quality  
in every detail

*Dans ce système le moindre détail  
est synonyme de qualité*



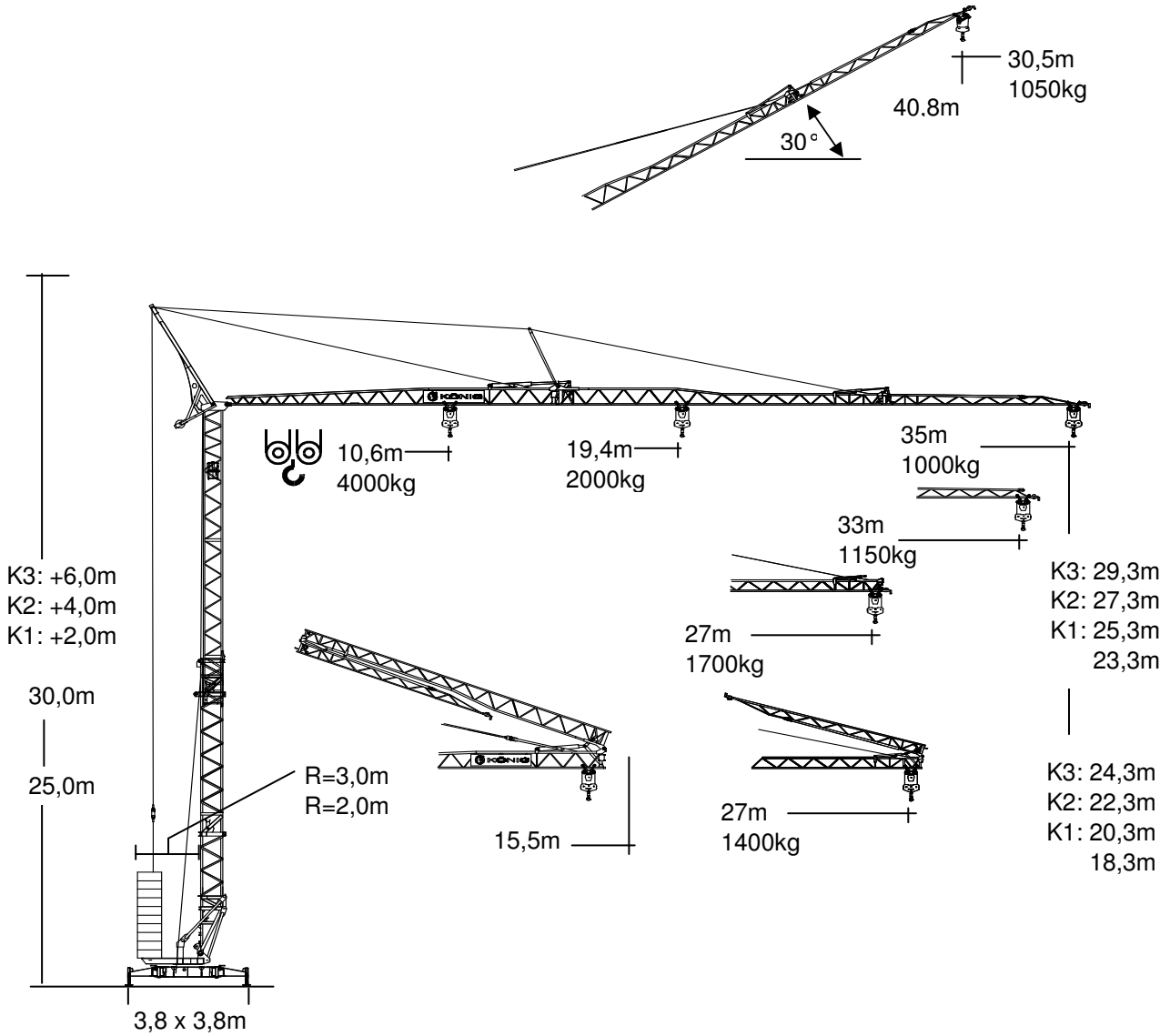
DIN 15018 - H1 - B3

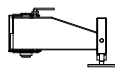


**KÖNIG-KRANE®**

# K 1035 TKH

Technische Daten    Technical data  
Caractéristiques techniques

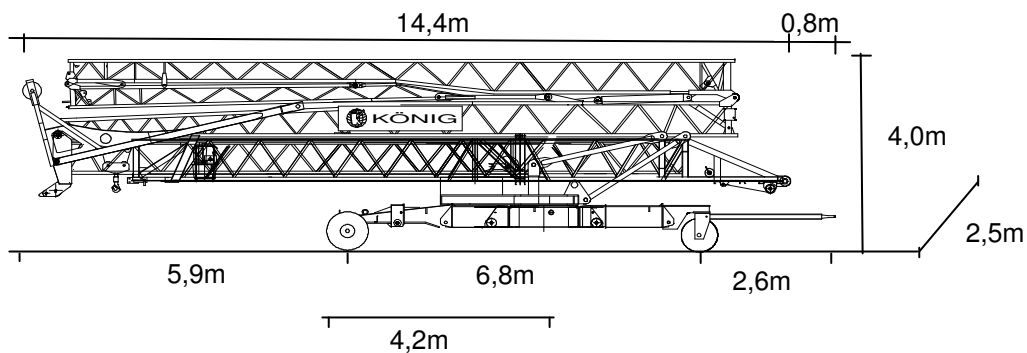


|  | <b>In Betrieb</b><br>In service<br><i>En service</i> | <b>außer Betrieb</b><br>Out of service<br><i>Hors service</i> |
|---|--|---|
| <b>Eckdrücke</b><br>Reactions<br><i>Réaction</i>                                    | 24 t   | 21 t  |

## Straßentransport

Transport by road

*Transport sur la route*



# K 1035 TKH

Technische Daten Technical data Caractéristiques techniques

## Ausladung und Tragfähigkeit

Radius and capacity *Portée et charge*

| Ausladung |    | max. Tragkr. |      | m x kg |      |      |      |      |      |      |      |      |      |      |      |
|-----------|----|--------------|------|--------|------|------|------|------|------|------|------|------|------|------|------|
| m         | 0° | t            | m    | 19     | 20   | 22   | 24   | 26   | 27   | 30   | 31   | 32   | 33   | 34   | 35   |
| 35        |    | 2,0          | 20,2 | 2000   | 2000 | 1810 | 1640 | 1490 | 1430 | 1260 | 1210 | 1170 | 1130 | 1090 | 1050 |
| 33        |    | 2,0          | 21,3 | 2000   | 2000 | 1920 | 1740 | 1590 | 1520 | 1340 | 1290 | 1240 | 1200 |      |      |
| 27        |    | 2,0          | 24,0 | 2000   | 2000 | 2000 | 2000 | 1830 | 1750 |      |      |      |      |      |      |
| 30°       |    | Ausl. (m)    |      | 16,7   | 17,5 | 19,2 | 21,0 | 22,7 | 23,6 | 26,2 | 27,0 | 27,9 | 28,8 | 29,6 | 30,5 |
| 30°       |    | HH (m) + K   |      | 32,8   | 33,3 | 34,3 | 35,3 | 36,3 | 36,8 | 38,3 | 38,8 | 39,3 | 39,8 | 40,3 | 40,8 |

| Ausladung |    | max. Tragkr. |      | m x kg |      |      |      |      |      |      |      |      |      |      |      |
|-----------|----|--------------|------|--------|------|------|------|------|------|------|------|------|------|------|------|
| m         | 0° | t            | m    | 10     | 13   | 15   | 17   | 19   | 21   | 23   | 25   | 27   | 30   | 33   | 35   |
| 35        |    | 2,0          | 19,4 | 2000   | 2000 | 2000 | 2000 | 2000 | 1860 | 1670 | 1520 | 1390 | 1230 | 1100 | 1030 |
|           |    | 4,0          | 10,6 | 4000   | 3200 | 2700 | 2340 | 2050 | 1830 | 1640 | 1490 | 1360 | 1200 | 1070 | 1000 |
| 33        |    | 2,0          | 20,6 | 2000   | 2000 | 2000 | 2000 | 2000 | 1980 | 1790 | 1620 | 1490 | 1320 | 1180 |      |
|           |    | 4,0          | 11,1 | 4000   | 3410 | 2883 | 2490 | 2190 | 1950 | 1760 | 1590 | 1460 | 1290 | 1150 |      |
| 27        |    | 2,0          | 23,4 | 2000   | 2000 | 2000 | 2000 | 2000 | 2000 | 2000 | 1890 | 1730 |      |      |      |
|           |    | 4,0          | 12,6 | 4000   | 3950 | 3340 | 2890 | 2550 | 2270 | 2040 | 1860 | 1700 |      |      |      |

## Geschwindigkeiten Speeds Vitesses

|  | Stufe Step Cran | m/min.                         | kg          | kW     |
|--|-----------------|--------------------------------|-------------|--------|
|  | 1               | 6 - 3                          | 2000 - 4000 | 3,5    |
|  | 2               | 22 - 11                        | 2000 - 4000 | 9 PU   |
|  | 3               | 44 - 22                        | 1100 - 2200 | 11     |
|  | 1               | 6 - 3                          | 2000 - 4000 |        |
|  | 2               | 22 - 11                        | 2000 - 4000 | 11 FU  |
|  | 3               | 44 - 22                        | 1100 - 2200 |        |
|  | 1               | 20                             |             | 1,1 PU |
|  | 2               | 40                             |             | 1,5    |
|  |                 | 0-50                           |             | 3 FU   |
|  | 0-0,8           | U/min.<br>sl./min.<br>tr./min. |             | 3 FU   |



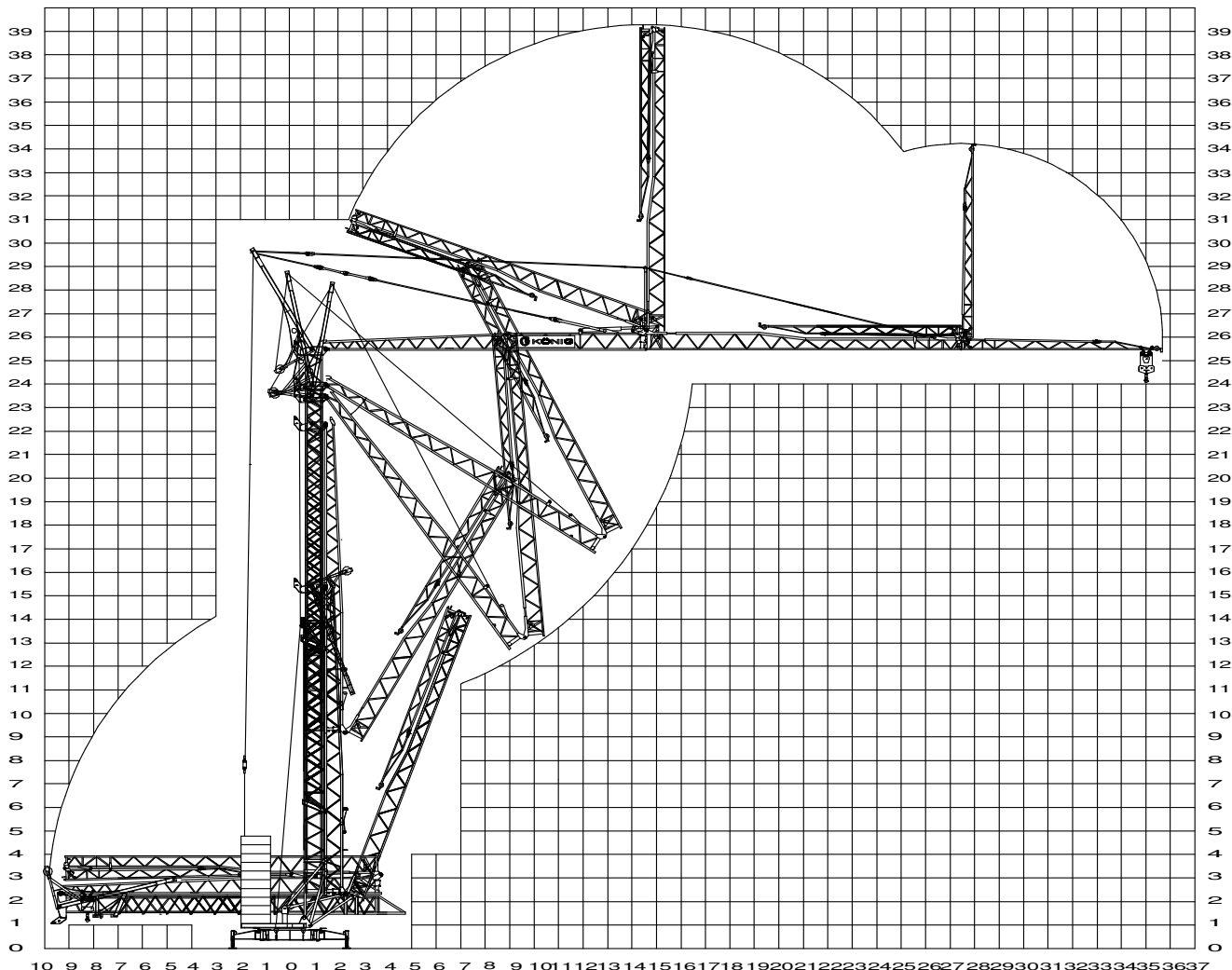
Leitungsquerschnitt bis 50 m  
Cross section of cable up to  
*Section de cable jusque à*  
5x10<sup>2</sup>

Betriebsspannung  
Operation voltage  
*Tension de service*  
400 V

Frequenz  
Frequency  
*Fréquence*  
50 Hz

Gesamtanschlußwert  
Power requirement  
*Puissance requise*  
13,2 kVA (15,5 KW)

## Montage Mounting Montage



## Gewichte Weight Poids

|                        |       |            |        |                                      |        |
|------------------------|-------|------------|--------|--------------------------------------|--------|
| <b>Zentralballast</b>  |       |            |        | <b>Transportgewicht ca.*</b>         |        |
| Central ballast weight |       |            |        | Transport weight approx.             | 14,4 t |
| <i>Lest de base</i>    |       |            |        | <i>Poids de transport env.</i>       |        |
| <b>Gegengewicht</b>    |       |            |        | <b>Konstruktionsgewicht ca.</b>      |        |
| Counterweight          | R=3,0 | 10 x 2,1 t | 21,0 t | Dead weight approx.                  | 12,7 t |
| <i>Contrepoids</i>     | R=2,0 | 12 x 2,1 t | 25,2 t | <i>Poids de la construction env.</i> |        |

\* inkl. Transportachse KSFW1 und -adapter.

**König Baumaschinen-Vertrieb GmbH**  
 Postfach 1164 - D-53563 Asbach/Ww.  
 D-53567 Asbach-Schöneberg  
 Tel.: ++49 (0)2683 / 9172-0  
 Fax: ++49 (0)2683 / 9172-10  
 eMail: info@koenig-krane.de  
 Internet: www.koenig-krane.de

Ihr König-Fachhändler: